



MAIR

WORKBOAT
TENDER

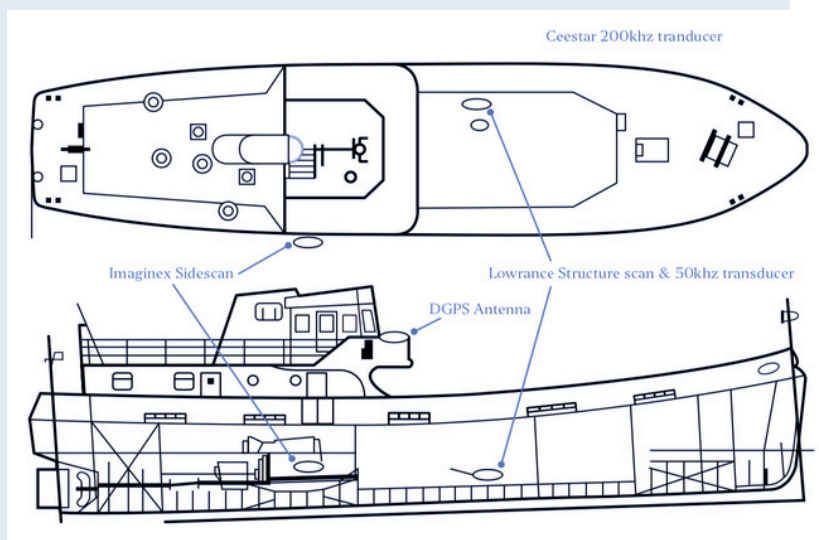
SSS Co LTD



- LOA 24.35m
- BOA 6.4m
- Draft 2.4m
- Flag UK
- Class Workboat Code CAT2
(12 passengers, plus 4 crew)
- Speed 10.5 knots
- Consumption 45 litres/hr (10 knots)
- Range 1200 miles
- MMSI 235004042
- Call Sign VSPO9
- Crane 18 t/m (3.7T at ships side).
- 8T Tugger Winch.
- 3000psi water jetting plant.
- Welding and burning plant.
- Ceestar Survey Grade Echo
Sounder; side scan & down scan.
- Valeport Digital Sound Velocity
Profiler.
- BeamworX NavAQ Software Suite.
- 3 Twin Cabins, 3 Single Cabins,
Galley and Mess.



Image credit: Nathan Griffith. Image has been edited to prevent misrepresentation.



CONTACT INFO@SSSCO.CO.UK
(+44) 07970 029012

SEVERN SEA SHIPPING CO LTD, THE HARBOUR, LYNMOUTH,
NORTH DEVON, U.K., EX35 6EL